

Circuit de Spa
TCR BeNeLux
RACE 2

CLASSIFICATION

22/05/2016

| Clas. | Nº | Entrant | Driver | Driver 2 | Team | Car | Group | Class | Laps | Total Time | Km/h. | Gap | Best | Time | Km/h. |
|-------|----|-------------------------|---------------------|----------|-------------------------|-----------------|-------|-------|------|------------|---------|--------|------|----------|---------|
| 1 | 2 | Delahaye Racing Team | MONDRON Guillaume | | Delahaye Racing | SEAT Leon TCR | TCR | | 6 | 18'52.358 | 133.603 | | 1 | 2'40.953 | 156.657 |
| 2 | 18 | Boutsen Ginion Racing | MONTEIRO Tiago | | Boutsen Ginion Racing | Honda Civic TCR | TCR | | 6 | 18'53.076 | 133.519 | 0"718 | 1 | 2'39.919 | 157.670 |
| 3 | 11 | Bas Koeten Racing | CORONEL Tom | | Bas Koeten Racing | SEAT Leon TCR | TCR | | 6 | 18'53.210 | 133.503 | 0"852 | 2 | 2'40.936 | 156.674 |
| 4 | 4 | Delahaye Racing Team | DE LEVAL Romain | | Delahaye Racing | VW Golf TCR | TCR | | 6 | 18'54.108 | 133.397 | 1"750 | 2 | 2'41.822 | 155.816 |
| 5 | 52 | Team WRT | POTTY Maxime | | WRT | VW Golf TCR | TCR | | 6 | 18'55.178 | 133.272 | 2"820 | 2 | 2'41.290 | 156.330 |
| 6 | 20 | Belgian VW Club | BALTHAZAR Kevin | | Milo Racing | VW Golf TCR | TCR | | 6 | 18'57.182 | 133.037 | 4"824 | 2 | 2'42.276 | 155.380 |
| 7 | 21 | Belgian VW Club | DERMONT David | | Milo Racing | VW Golf TCR | TCR | | 6 | 18'58.186 | 132.919 | 5"828 | 2 | 2'42.570 | 155.099 |
| 8 | 9 | Bas Koeten Racing | CENCETTI Loris | | Bas Koeten Racing | SEAT Leon TCR | TCR | | 6 | 18'59.108 | 132.812 | 6"750 | 2 | 2'42.233 | 155.421 |
| 9 | 10 | Ferry Monster Autosport | RADERMECKER Vincent | | Ferry Monster Autosport | SEAT Leon TCR | TCR | | 6 | 19'00.012 | 132.706 | 7"654 | 2 | 2'40.476 | 157.123 |
| 10 | 7 | Team WRT | DEJONGHE Sam | | RACB Natonal Team | SEAT Leon TCR | TCR | | 6 | 19'26.397 | 129.705 | 34"039 | 2 | 2'38.817 | 158.764 |

NOT CLASSIFIED

| | | | | | | | | | | | | | | | |
|----|---|-----------------------|--------------------|--|-----------------------|-----------------|-----|--|---|-----------|---------|--------|---|----------|---------|
| 11 | 3 | Delahaye Racing Team | VAN DALEN Didier | | Delahaye Racing | VW Golf TCR | TCR | | 4 | 11'32.892 | 152.148 | 2 Lap. | 2 | 2'42.012 | 155.633 |
| 12 | 5 | Boutsen Ginion Racing | LESSENNES Benjamin | | Boutsen Ginion Racing | Honda Civic TCR | TCR | | 1 | 05'01.662 | 83.585 | 5 Lap. | 1 | 5'01.662 | 83.585 |

Number 3 +30 seconds Time penalty for causing collision

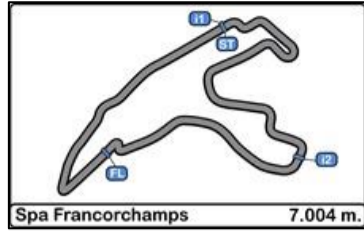
Fastest lap DEJONGHE Sam 2'38.817 158.764 Km/h.

Published at:.....

Track Status **DRY**

| | | |
|------------------|-----------------------|------------------------|
| Stewards: | Race Director: | Timekeeper: |
|------------------|-----------------------|------------------------|





Circuit de Spa
TCR BeNeLux
RACE 2

LAP ANALYSIS

22/05/2016

| Number | 2 | | | 3 | | | 4 | | | 5 | | | 7 | | |
|--------------------|----------|----------|---------|----------|----------|---------|----------|----------|---------|----------|----------|---------|----------|----------|---------|
| | Lap Time | Partial | Speed | Lap Time | Partial | Speed | Lap Time | Partial | Speed | Lap Time | Partial | Speed | Lap Time | Partial | Speed |
| 1 ^a - 1 | 0'47.593 | 0'47.593 | 231.684 | 0'48.026 | 0'48.026 | 228.293 | 0'48.959 | 0'48.959 | 226.087 | 1'26.099 | 1'26.099 | 105.644 | 0'47.517 | 0'47.517 | 227.185 |
| 1 ^a - 2 | 2'00.786 | 1'13.193 | | 2'03.749 | 1'15.723 | | 2'03.861 | 1'14.902 | | 3'44.383 | 2'18.284 | | 2'20.437 | 1'32.920 | |
| 1 ^a - 3 | 2'40.953 | 0'40.167 | | 2'44.160 | 0'40.411 | | 2'45.191 | 0'41.330 | | 5'01.662 | 1'17.279 | | 3'00.864 | 0'40.427 | |
| 2 ^a - 1 | 0'45.453 | 0'45.453 | 226.087 | 0'46.437 | 0'46.437 | 225.001 | 0'46.424 | 0'46.424 | 223.924 | | | | 0'45.466 | 0'45.466 | 229.412 |
| 2 ^a - 2 | 2'00.814 | 1'15.361 | | 2'00.977 | 1'14.540 | | 2'01.243 | 1'14.819 | | | | | 1'58.799 | 1'13.333 | |
| 2 ^a - 3 | 2'41.030 | 0'40.216 | | 2'42.012 | 0'41.035 | | 2'41.822 | 0'40.579 | | | | | 2'38.817 | 0'40.018 | |
| 3 ^a - 1 | 0'45.795 | 0'45.795 | 218.692 | 0'45.752 | 0'45.752 | 219.719 | 0'45.567 | 0'45.567 | 214.679 | | | | 0'45.423 | 0'45.423 | 207.080 |
| 3 ^a - 2 | 2'05.214 | 1'19.419 | | 2'05.350 | 1'19.598 | | 2'04.895 | 1'19.328 | | | | | 2'02.405 | 1'16.982 | |
| 3 ^a - 3 | 2'46.900 | 0'41.686 | | 2'47.394 | 0'42.044 | | 2'46.687 | 0'41.792 | | | | | 2'43.207 | 0'40.802 | |
| 4 ^a - 1 | 0'46.502 | 0'46.502 | 195.816 | 0'46.639 | 0'46.639 | 207.080 | 0'46.902 | 0'46.902 | 208.929 | | | | 0'46.638 | 0'46.638 | 198.306 |
| 4 ^a - 2 | 2'07.326 | 1'20.824 | | 2'06.541 | 1'19.902 | | 2'07.032 | 1'20.130 | | | | | 2'07.147 | 1'20.509 | |
| 4 ^a - 3 | 2'51.268 | 0'43.942 | | 2'49.326 | 0'42.785 | | 2'51.372 | 0'44.340 | | | | | 2'51.535 | 0'44.388 | |
| 5 ^a - 1 | 0'48.591 | 0'48.591 | 197.469 | | | | 0'51.094 | 0'51.094 | 157.047 | | | | 0'50.889 | 0'50.889 | 167.742 |
| 5 ^a - 2 | 2'17.602 | 1'29.011 | | | | | 2'19.523 | 1'28.429 | | | | | 2'21.458 | 1'30.569 | |
| 5 ^a - 3 | 3'06.498 | 0'48.896 | | | | | 3'08.386 | 0'48.863 | | | | | 3'09.695 | 0'48.237 | |
| 6 ^a - 1 | 1'29.119 | 1'29.119 | | | | | 1'26.331 | 1'26.331 | | | | | 2'50.349 | 2'50.349 | 177.947 |
| 6 ^a - 2 | 3'26.458 | 1'57.339 | | | | | 3'21.945 | 1'55.614 | | | | | 4'13.526 | 1'23.177 | |
| 6 ^a - 3 | 4'45.709 | 1'19.251 | | | | | 4'40.650 | 1'18.705 | | | | | 5'02.279 | 0'48.753 | |

| Ideal Lap | |
|-----------|----------|
| 0'45.453 | 0'45.453 |
| 1'58.646 | 1'13.193 |
| 2'38.813 | 0'40.167 |

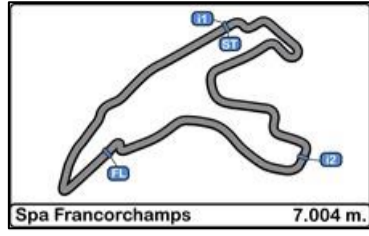
| Ideal Lap | |
|-----------|----------|
| 0'45.752 | 0'45.752 |
| 2'00.292 | 1'14.540 |
| 2'40.703 | 0'40.411 |

| Ideal Lap | |
|-----------|----------|
| 0'45.567 | 0'45.567 |
| 2'00.386 | 1'14.819 |
| 2'40.965 | 0'40.579 |

| Ideal Lap | |
|-----------|----------|
| 1'26.099 | 1'26.099 |
| 3'44.383 | 2'18.284 |
| 5'01.662 | 1'17.279 |

| Ideal Lap | |
|-----------|----------|
| 0'45.423 | 0'45.423 |
| 1'58.756 | 1'13.333 |
| 2'38.774 | 0'40.018 |

| Ideal Best Lap | |
|----------------|----------|
| 0'45.141 | 0'45.141 |
| 1'57.604 | 1'12.463 |
| 2'37.622 | 0'40.018 |



Circuit de Spa
TCR BeNeLux
RACE 2

LAP ANALYSIS

22/05/2016

| Number | 9 | | | 10 | | | 11 | | | 18 | | | 20 | | |
|--------------------|----------|----------|---------|----------|----------|---------|----------|----------|---------|----------|----------|---------|----------|----------|---------|
| | Lap Time | Partial | Speed | Lap Time | Partial | Speed | Lap Time | Partial | Speed | Lap Time | Partial | Speed | Lap Time | Partial | Speed |
| 1 ^a - 1 | 0'50.782 | 0'50.782 | 209.866 | 0'50.783 | 0'50.783 | 227.185 | 0'50.259 | 0'50.259 | 227.185 | 0'46.829 | 0'46.829 | 229.412 | 0'49.259 | 0'49.259 | 217.675 |
| 1 ^a - 2 | 2'04.743 | 1'13.961 | | 2'04.203 | 1'13.420 | | 2'04.434 | 1'14.175 | | 1'59.292 | 1'12.463 | | 2'02.200 | 1'12.941 | |
| 1 ^a - 3 | 2'45.946 | 0'41.203 | | 2'45.517 | 0'41.314 | | 2'45.595 | 0'41.161 | | 2'39.919 | 0'40.627 | | 2'42.444 | 0'40.244 | |
| 2 ^a - 1 | 0'45.858 | 0'45.858 | 211.765 | 0'45.222 | 0'45.222 | 215.669 | 0'45.359 | 0'45.359 | 221.801 | 0'45.856 | 0'45.856 | 227.185 | 0'45.878 | 0'45.878 | 223.924 |
| 2 ^a - 2 | 2'01.356 | 1'15.498 | | 2'00.046 | 1'14.824 | | 2'00.249 | 1'14.890 | | 2'00.493 | 1'14.637 | | 2'01.480 | 1'15.602 | |
| 2 ^a - 3 | 2'42.233 | 0'40.877 | | 2'40.476 | 0'40.430 | | 2'40.936 | 0'40.687 | | 2'41.306 | 0'40.813 | | 2'42.276 | 0'40.796 | |
| 3 ^a - 1 | 0'46.134 | 0'46.134 | 205.264 | 0'45.400 | 0'45.400 | 209.866 | 0'46.188 | 0'46.188 | 200.001 | 0'45.678 | 0'45.678 | 225.001 | 0'46.186 | 0'46.186 | 217.675 |
| 3 ^a - 2 | 2'06.642 | 1'20.508 | | 2'04.171 | 1'18.771 | | 2'05.511 | 1'19.323 | | 2'05.473 | 1'19.795 | | 2'06.472 | 1'20.286 | |
| 3 ^a - 3 | 2'48.355 | 0'41.713 | | 2'45.699 | 0'41.528 | | 2'47.349 | 0'41.838 | | 2'47.382 | 0'41.909 | | 2'48.476 | 0'42.004 | |
| 4 ^a - 1 | 0'46.243 | 0'46.243 | 183.530 | 0'47.279 | 0'47.279 | 208.929 | 0'46.765 | 0'46.765 | 198.306 | 0'46.012 | 0'46.012 | 191.804 | 0'47.451 | 0'47.451 | 194.191 |
| 4 ^a - 2 | 2'08.836 | 1'22.593 | | 2'07.828 | 1'20.549 | | 2'07.323 | 1'20.558 | | 2'06.265 | 1'20.253 | | 2'09.641 | 1'22.190 | |
| 4 ^a - 3 | 2'54.090 | 0'45.254 | | 3'07.064 | 0'59.236 | | 2'51.651 | 0'44.328 | | 2'50.475 | 0'44.210 | | 2'56.003 | 0'46.362 | |
| 5 ^a - 1 | 0'50.406 | 0'50.406 | 152.443 | 0'51.161 | 0'51.161 | 172.059 | 0'50.405 | 0'50.405 | 162.500 | 0'49.743 | 0'49.743 | 191.804 | 0'50.524 | 0'50.524 | 174.627 |
| 5 ^a - 2 | 2'24.781 | 1'34.375 | | 2'23.147 | 1'31.986 | | 2'18.359 | 1'27.954 | | 2'19.881 | 1'30.138 | | 2'20.760 | 1'30.236 | |
| 5 ^a - 3 | 3'12.923 | 0'48.142 | | 3'14.644 | 0'51.497 | | 3'07.220 | 0'48.861 | | 3'09.069 | 0'49.188 | | 3'10.754 | 0'49.994 | |
| 6 ^a - 1 | 1'22.691 | 1'22.691 | | 1'13.703 | 1'13.703 | | 1'25.794 | 1'25.794 | | 1'28.896 | 1'28.896 | | 1'21.843 | 1'21.843 | |
| 6 ^a - 2 | 3'14.804 | 1'52.113 | | 3'05.876 | 1'52.173 | | 3'21.826 | 1'56.032 | | 3'25.620 | 1'56.724 | | 3'16.632 | 1'54.789 | |
| 6 ^a - 3 | 4'35.561 | 1'20.757 | | 4'26.612 | 1'20.736 | | 4'40.459 | 1'18.633 | | 4'44.925 | 1'19.305 | | 4'37.229 | 1'20.597 | |

| Ideal Lap | |
|-----------|----------|
| 0'45.858 | 0'45.858 |
| 1'59.819 | 1'13.961 |
| 2'40.696 | 0'40.877 |

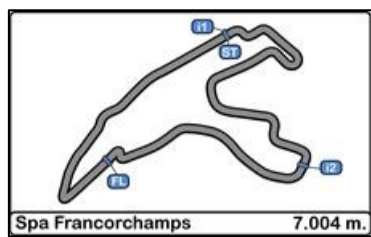
| Ideal Lap | |
|-----------|----------|
| 0'45.222 | 0'45.222 |
| 1'58.642 | 1'13.420 |
| 2'39.072 | 0'40.430 |

| Ideal Lap | |
|-----------|----------|
| 0'45.359 | 0'45.359 |
| 1'59.534 | 1'14.175 |
| 2'40.221 | 0'40.687 |

| Ideal Lap | |
|-----------|----------|
| 0'45.678 | 0'45.678 |
| 1'58.141 | 1'12.463 |
| 2'38.768 | 0'40.627 |

| Ideal Lap | |
|-----------|----------|
| 0'45.878 | 0'45.878 |
| 1'58.819 | 1'12.941 |
| 2'39.063 | 0'40.244 |

| Ideal Best Lap | |
|----------------|----------|
| 0'45.141 | 0'45.141 |
| 1'57.604 | 1'12.463 |
| 2'37.622 | 0'40.018 |



Circuit de Spa
TCR BeNeLux
RACE 2

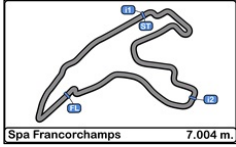
LAP ANALYSIS

22/05/2016

| Number | 21 | | | 52 | | |
|--------------------|----------|----------|---------|----------|----------|---------|
| Lap | Lap Time | Partial | Speed | Lap Time | Partial | Speed |
| 1 ^a - 1 | 0'50.993 | 0'50.993 | 207.080 | 0'51.173 | 0'51.173 | 209.866 |
| 1 ^a - 2 | 2'05.456 | 1'14.463 | | 2'05.674 | 1'14.501 | |
| 1 ^a - 3 | 2'46.722 | 0'41.266 | | 2'47.513 | 0'41.839 | |
| 2 ^a - 1 | 0'45.878 | 0'45.878 | 204.367 | 0'45.141 | 0'45.141 | 206.168 |
| 2 ^a - 2 | 2'01.596 | 1'15.718 | | 2'00.337 | 1'15.196 | |
| 2 ^a - 3 | 2'42.570 | 0'40.974 | | 2'41.290 | 0'40.953 | |
| 3 ^a - 1 | 0'47.876 | 0'47.876 | 213.699 | 0'45.234 | 0'45.234 | 213.699 |
| 3 ^a - 2 | 2'05.819 | 1'17.943 | | 2'04.432 | 1'19.198 | |
| 3 ^a - 3 | 2'47.915 | 0'42.096 | | 2'46.052 | 0'41.620 | |
| 4 ^a - 1 | 0'46.658 | 0'46.658 | 194.191 | 0'46.046 | 0'46.046 | 190.244 |
| 4 ^a - 2 | 2'07.373 | 1'20.715 | | 2'08.873 | 1'22.827 | |
| 4 ^a - 3 | 2'52.507 | 0'45.134 | | 2'53.275 | 0'44.402 | |
| 5 ^a - 1 | 0'50.443 | 0'50.443 | 163.637 | 0'50.350 | 0'50.350 | 163.067 |
| 5 ^a - 2 | 2'21.416 | 1'30.973 | | 2'21.280 | 1'30.930 | |
| 5 ^a - 3 | 3'11.326 | 0'49.910 | | 3'10.631 | 0'49.351 | |
| 6 ^a - 1 | 1'23.371 | 1'23.371 | | 1'22.177 | 1'22.177 | |
| 6 ^a - 2 | 3'16.324 | 1'52.953 | | 3'17.306 | 1'55.129 | |
| 6 ^a - 3 | 4'37.146 | 1'20.822 | | 4'36.417 | 1'19.111 | |

| Ideal Lap | |
|-----------|----------|
| 0'45.878 | 0'45.878 |
| 2'00.341 | 1'14.463 |
| 2'41.315 | 0'40.974 |

| Ideal Lap | |
|-----------|----------|
| 0'45.141 | 0'45.141 |
| 1'59.642 | 1'14.501 |
| 2'40.595 | 0'40.953 |



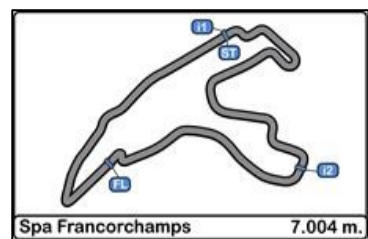
Circuit de Spa TCR BeNeLux RACE 2

Best Sectors Results

22/05/2016

| Sector - 1 | | | Sector - 2 | | | Sector - 3 | | | Ideal Lap vs Best Lap | | | |
|------------|------------------------|----------|------------------------|----------|------------------------|------------|------|------------------------|-----------------------|----------|------|--|
| Ord. | N° Driver | Time | N° Driver | Time | N° Driver | Time | Ord. | N° Driver | Ideal Lap | Best Lap | Ord. | |
| 1 | 52 POTTY Maxime | 45.141 | 18 MONTEIRO Tiago | 1'12.463 | 7 DEJONGHE Sam | 40.018 | 1 | 18 MONTEIRO Tiago | 2'38.768 | 2'39.919 | 2 | |
| 2 | 10 RADERMECKER Vincent | 45.222 | 20 BALTHAZAR Kevin | 1'12.941 | 2 MONDRON Guillaume | 40.167 | 2 | 7 DEJONGHE Sam | 2'38.774 | 2'38.817 | 1 | |
| 3 | 11 CORONEL Tom | 45.359 | 2 MONDRON Guillaume | 1'13.193 | 20 BALTHAZAR Kevin | 40.244 | 3 | 2 MONDRON Guillaume | 2'38.813 | 2'40.953 | 5 | |
| 4 | 7 DEJONGHE Sam | 45.423 | 7 DEJONGHE Sam | 1'13.333 | 3 VAN DALEN Didier | 40.411 | 4 | 20 BALTHAZAR Kevin | 2'39.063 | 2'42.276 | 10 | |
| 5 | 2 MONDRON Guillaume | 45.453 | 10 RADERMECKER Vincent | 1'13.420 | 10 RADERMECKER Vincent | 40.430 | 5 | 10 RADERMECKER Vincent | 2'39.072 | 2'40.476 | 3 | |
| 6 | 4 DE LEVAL Romain | 45.567 | 9 CENCETTI Loris | 1'13.961 | 4 DE LEVAL Romain | 40.579 | 6 | 11 CORONEL Tom | 2'40.221 | 2'40.936 | 4 | |
| 7 | 18 MONTEIRO Tiago | 45.678 | 11 CORONEL Tom | 1'14.175 | 18 MONTEIRO Tiago | 40.627 | 7 | 52 POTTY Maxime | 2'40.595 | 2'41.290 | 6 | |
| 8 | 3 VAN DALEN Didier | 45.752 | 21 DERMONT David | 1'14.463 | 11 CORONEL Tom | 40.687 | 8 | 9 CENCETTI Loris | 2'40.696 | 2'42.233 | 9 | |
| 9 | 9 CENCETTI Loris | 45.858 | 52 POTTY Maxime | 1'14.501 | 9 CENCETTI Loris | 40.877 | 9 | 3 VAN DALEN Didier | 2'40.703 | 2'42.012 | 8 | |
| 10 | 20 BALTHAZAR Kevin | 45.878 | 3 VAN DALEN Didier | 1'14.540 | 52 POTTY Maxime | 40.953 | 10 | 4 DE LEVAL Romain | 2'40.965 | 2'41.822 | 7 | |
| 11 | 21 DERMONT David | 45.878 | 4 DE LEVAL Romain | 1'14.819 | 21 DERMONT David | 40.974 | 11 | 21 DERMONT David | 2'41.315 | 2'42.570 | 11 | |
| 12 | 5 LESSENNES Benjamin | 1'26.099 | 5 LESSENNES Benjamin | 2'18.284 | 5 LESSENNES Benjamin | 1'17.279 | 12 | 5 LESSENNES Benjamin | Transponder | 5'01.662 | 12 | |





Circuit de Spa

TCR BeNeLux

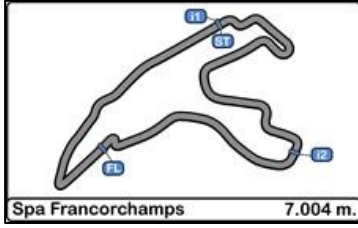
RACE 2

BEST TOP SPEEDS

22/05/2016

| Ord. | N° | Entrant | Driver | Driver 2 | Team | Car | Group | Class | Top 1 | | Top 2 | | Top 3 | | Top 4 | | Top 5 | | Avg. |
|------|----|-------------------------|---------------------|----------|-------------------------|-----------------|-------|-------|---------|-----|---------|-----|---------|-----|---------|-----|---------|-----|---------|
| | | | | | | | | | Km/h | Lap | Km/h | Lap | Km/h | Lap | Km/h | Lap | Km/h | Lap | |
| 1 | 2 | Delahaye Racing Team | MONDRON Guillaume | | Delahaye Racing | SEAT Leon TCR | TCR | | 231.683 | 1 | 226.087 | 2 | 218.692 | 3 | 197.468 | 5 | 195.816 | 4 | 213.949 |
| 2 | 7 | Team WRT | DEJONGHE Sam | | RACB Natonal Team | SEAT Leon TCR | TCR | | 229.412 | 2 | 227.184 | 1 | 207.080 | 3 | 198.305 | 4 | 177.947 | 6 | 207.986 |
| 3 | 18 | Boutsen Ginion Racing | MONTEIRO Tiago | | Boutsen Ginion Racing | Honda Civic TCR | TCR | | 229.412 | 1 | 227.184 | 2 | 225.000 | 3 | 191.803 | 5 | 191.803 | 4 | 213.041 |
| 4 | 3 | Delahaye Racing Team | VAN DALEN Didier | | Delahaye Racing | VW Golf TCR | TCR | | 228.293 | 1 | 225.000 | 2 | 219.718 | 3 | 207.080 | 4 | | | 220.023 |
| 5 | 10 | Ferry Monster Autosport | RADERMECKER Vincent | | Ferry Monster Autosport | SEAT Leon TCR | TCR | | 227.184 | 1 | 215.668 | 2 | 209.865 | 3 | 208.929 | 4 | 172.059 | 5 | 206.741 |
| 6 | 11 | Bas Koeten Racing | CORONEL Tom | | Bas Koeten Racing | SEAT Leon TCR | TCR | | 227.184 | 1 | 221.801 | 2 | 200.000 | 3 | 198.305 | 4 | 162.500 | 5 | 201.958 |
| 7 | 4 | Delahaye Racing Team | DE LEVAL Romain | | Delahaye Racing | VW Golf TCR | TCR | | 226.087 | 1 | 223.923 | 2 | 214.679 | 3 | 208.929 | 4 | 157.047 | 5 | 206.133 |
| 8 | 20 | Belgian VW Club | BALTHAZAR Kevin | | Milo Racing | VW Golf TCR | TCR | | 223.923 | 2 | 217.674 | 3 | 217.674 | 1 | 194.191 | 4 | 174.627 | 5 | 205.618 |
| 9 | 21 | Belgian VW Club | DERMONT David | | Milo Racing | VW Golf TCR | TCR | | 213.699 | 3 | 207.080 | 1 | 204.367 | 2 | 194.191 | 4 | 163.636 | 5 | 196.594 |
| 10 | 52 | Team WRT | POTTY Maxime | | WRT | VW Golf TCR | TCR | | 213.699 | 3 | 209.865 | 1 | 206.167 | 2 | 190.244 | 4 | 163.066 | 5 | 196.608 |
| 11 | 9 | Bas Koeten Racing | CENCETTI Loris | | Bas Koeten Racing | SEAT Leon TCR | TCR | | 211.765 | 2 | 209.865 | 1 | 205.263 | 3 | 183.529 | 4 | 152.443 | 5 | 192.573 |
| 12 | 5 | Boutsen Ginion Racing | LESSENNES Benjamin | | Boutsen Ginion Racing | Honda Civic TCR | TCR | | 105.643 | 1 | | | | | | | | | 105.643 |





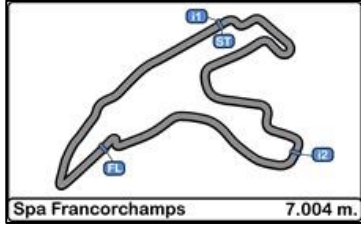
Circuit de Spa TCR BeNeLux RACE 2

FASTEST LAP SEQUENCE

22/05/2016

| Time of Day | Session Time | Nº | Entrant | Driver | Driver 2 | Team | Car | Group | Time | Km/h | Lap |
|--------------|--------------|----|-----------------------|----------------|----------|-----------------------|-----------------|-------|----------|---------|-----|
| 11:45'09.945 | 2'08.823 | 18 | Boutsen Ginion Racing | MONTEIRO Tiago | | Boutsen Ginion Racing | Honda Civic TCR | TCR | 2'39.919 | 157.670 | 1 |
| 11:48'09.413 | 5'08.585 | 7 | Team WRT | DEJONGHE Sam | | RACB Natonal Team | SEAT Leon TCR | TCR | 2'38.817 | 158.764 | 2 |





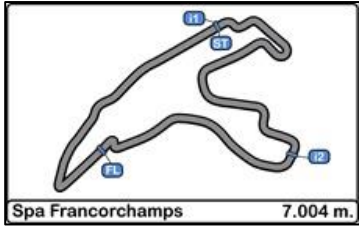
Circuit de Spa TCR BeNeLux RACE 2

EVENT MAXIMUM SPEED

22/05/2016

| Ord. | N° | Entrant | Driver | Driver 2 | Team | Car | Group | Class | Km/h | Lap | Session |
|------|----|-------------------------|---------------------|----------|-------------------------|-----------------|-------|-------|---------|-----|-----------------|
| 1 | 10 | Ferry Monster Autosport | RADERMECKER Vincent | | Ferry Monster Autosport | SEAT Leon TCR | TCR | | 240.001 | 7 | Qualifying Race |
| 2 | 5 | Boutsen Ginion Racing | LESSENNES Benjamin | | Boutsen Ginion Racing | Honda Civic TCR | TCR | | 237.564 | 7 | Qualifying Race |
| 3 | 18 | Boutsen Ginion Racing | MONTEIRO Tiago | | Boutsen Ginion Racing | Honda Civic TCR | TCR | | 237.564 | 6 | Qualifying Race |
| 4 | 52 | Team WRT | POTTY Maxime | | WRT | VW Golf TCR | TCR | | 237.564 | 8 | Qualifying Race |
| 5 | 2 | Delahaye Racing Team | MONDRON Guillaume | | Delahaye Racing | SEAT Leon TCR | TCR | | 236.364 | 3 | Qualifying Race |
| 6 | 3 | Delahaye Racing Team | VAN DALEN Didier | | Delahaye Racing | VW Golf TCR | TCR | | 236.364 | 10 | Qualifying Race |
| 7 | 7 | Team WRT | DEJONGHE Sam | | RACB Natonal Team | SEAT Leon TCR | TCR | | 236.364 | 5 | RACE 1 |
| 8 | 4 | Delahaye Racing Team | DE LEVAL Romain | | Delahaye Racing | VW Golf TCR | TCR | | 235.176 | 9 | Qualifying Race |
| 9 | 23 | Ecurie Le Perron | CAPRASSE Frédéric | | DG Sport Compétition | Opel Astra TCR | TCR | | 234.001 | 2 | RACE 1 |
| 10 | 20 | Belgian VW Club | BALTHAZAR Kevin | | Milo Racing | VW Golf TCR | TCR | | 234.000 | 4 | RACE 1 |
| 11 | 9 | Bas Koeten Racing | CENCETTI Loris | | Bas Koeten Racing | SEAT Leon TCR | TCR | | 231.684 | 5 | RACE 1 |
| 12 | 11 | Bas Koeten Racing | CORONEL Tom | | Bas Koeten Racing | SEAT Leon TCR | TCR | | 231.684 | 6 | RACE 1 |
| 13 | 21 | Belgian VW Club | DERMONT David | | Milo Racing | VW Golf TCR | TCR | | 231.684 | 2 | Qualifying Race |

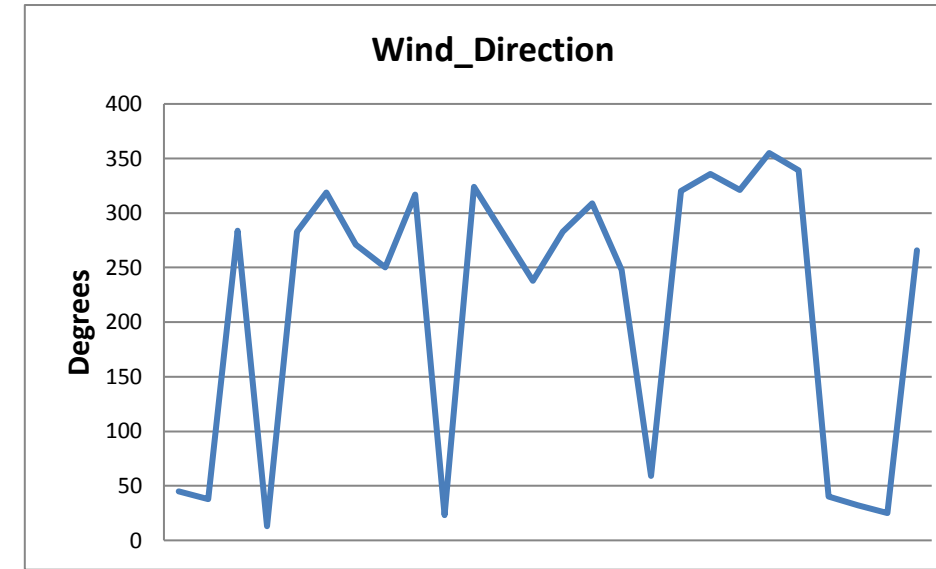
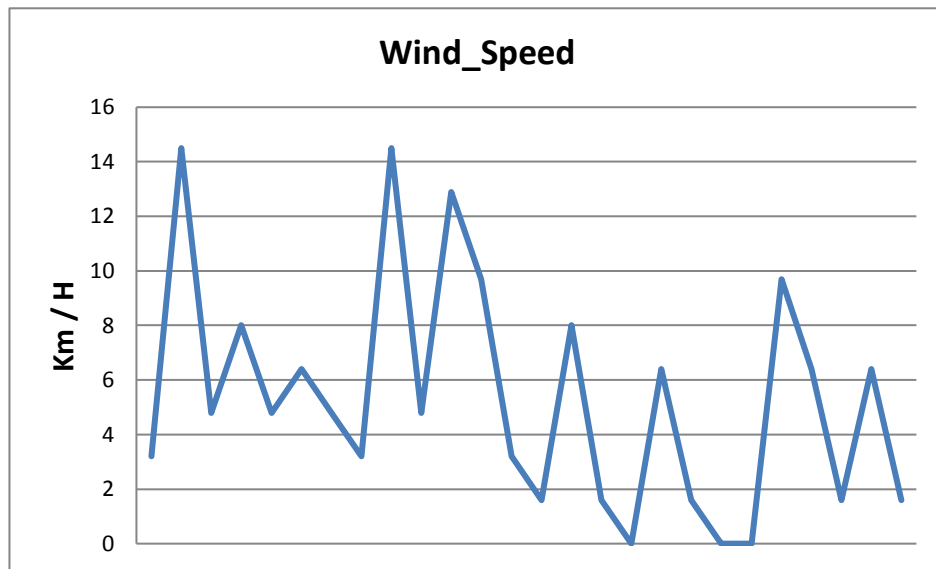
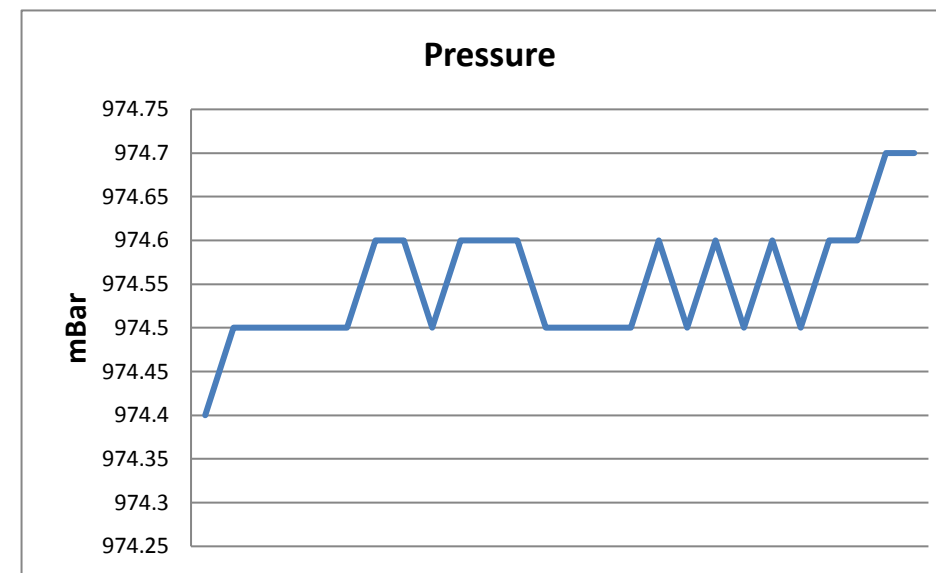
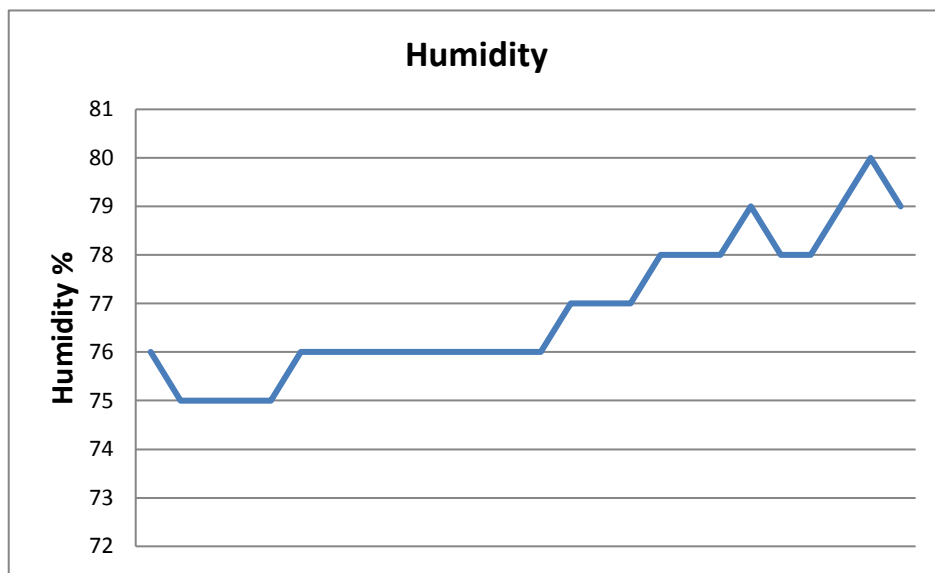
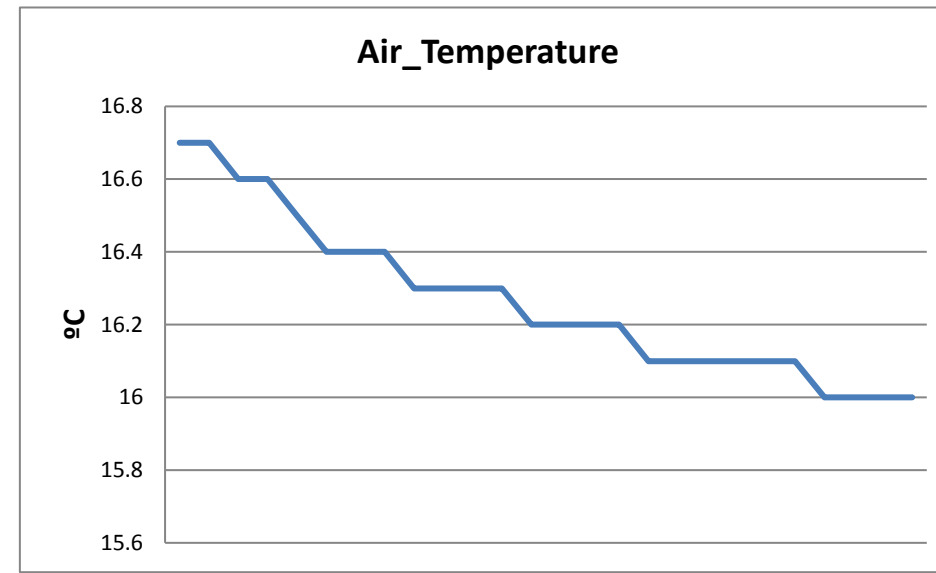
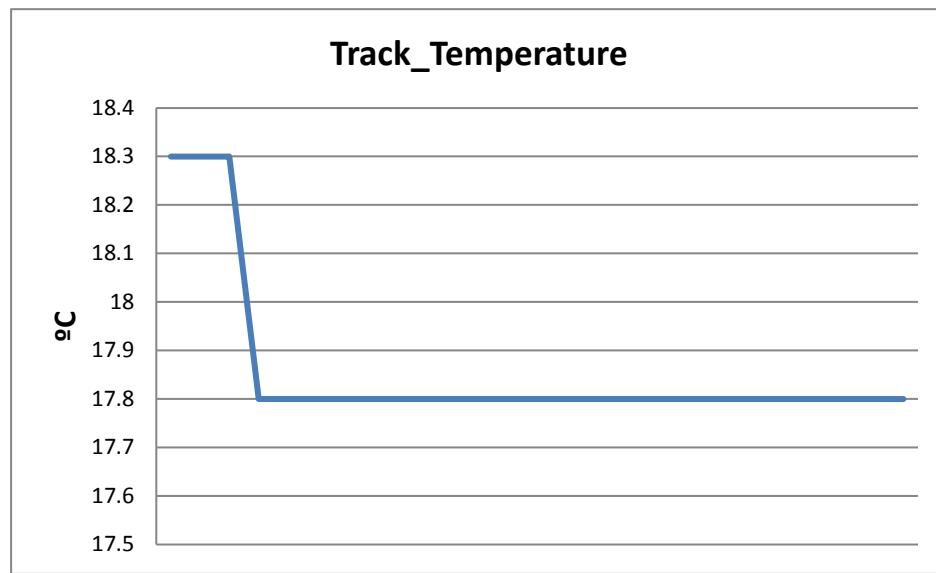


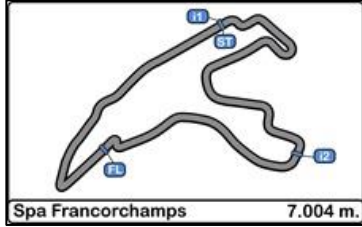


Circuit de Spa TCR BeNeLux RACE 2

WEATHER REPORT

Track Status **DRY**

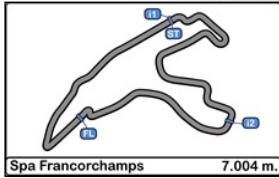




Circuit de Spa TCR BeNeLux RACE 2

LAP CHART

| Orden | Start | GAP / LT | 1ª | GAP / LT | 2ª | GAP / LT | 3ª | GAP / LT | 4ª | GAP / LT | 5ª | GAP / LT | 6ª | GAP / LT |
|-------|-------|-------------------|----|----------------------|----|--------------------|----|--------------------|----|--------------------|----|--------------------|----|--------------------|
| 1º | 11 | 2'36.284 | 18 | 2'39.919 | 18 | 2'41.306 | 18 | 2'47.382 | 18 | 2'50.475 | 2 | 3'06.498 | 2 | 4'45.709 |
| 2º | 10 | 0"003 2'36.287 | 2 | 1.034 2'40.953 | 2 | 0.758 2'41.03 | 2 | 0.276 2'46.9 | 2 | 1.069 2'51.268 | 18 | 1.502 3'09.069 | 18 | 0.718 4'44.925 |
| 3º | 2 | 0"755 2'37.039 | 20 | 2.525 2'42.444 | 20 | 3.495 2'42.276 | 10 | 3.085 2'45.699 | 3 | 3.810 2'49.326 | 11 | 6.102 3'07.22 | 11 | 0.852 4'40.459 |
| 4º | 18 | 1"098 2'37.382 | 3 | 4.241 2'44.16 | 10 | 4.768 2'40.476 | 20 | 4.589 2'48.476 | 4 | 5.990 2'51.372 | 4 | 6.809 3'08.386 | 4 | 1.750 4'40.65 |
| 5º | 20 | 1"214 2'37.498 | 4 | 5.272 2'45.191 | 3 | 4.947 2'42.012 | 3 | 4.959 2'47.394 | 11 | 6.449 2'51.651 | 52 | 12.112 3'10.631 | 52 | 2.820 4'36.417 |
| 6º | 4 | 1"562 2'37.846 | 10 | 5.598 2'45.517 | 11 | 5.306 2'40.936 | 4 | 5.093 2'46.687 | 52 | 9.048 2'53.275 | 20 | 13.304 3'10.754 | 20 | 4.824 4'37.229 |
| 7º | 7 | 1"725 2'38.009 | 11 | 5.676 2'45.595 | 4 | 5.788 2'41.822 | 11 | 5.273 2'47.349 | 20 | 10.117 2'56.003 | 21 | 14.391 3'11.326 | 21 | 5.828 4'37.146 |
| 8º | 23 | 2"525 2'38.809 | 9 | 6.027 2'45.946 | 9 | 6.954 2'42.233 | 52 | 6.248 2'46.052 | 21 | 10.632 2'52.507 | 9 | 16.898 3'12.923 | 9 | 6.750 4'35.561 |
| 9º | 9 | 3"084 2'39.368 | 21 | 6.803 2'46.722 | 52 | 7.578 2'41.29 | 9 | 7.927 2'48.355 | 9 | 11.542 2'54.09 | 7 | 17.469 3'09.695 | 10 | 7.654 4'26.612 |
| 10º | 21 | 3"090 2'39.374 | 52 | 7.594 2'47.513 | 21 | 8.067 2'42.57 | 21 | 8.600 2'47.915 | 7 | 15.341 2'51.535 | 10 | 26.751 3'14.644 | 7 | 34.039 5'02.279 |
| 11º | 5 | 3"866 2'40.150 | 7 | 20.945 3'00.864 | 7 | 18.456 2'38.817 | 7 | 14.281 2'43.207 | 10 | 19.674 3'07.064 | | | | |
| 12º | 3 | 4"216 2'40.500 | 5 | 2'21.743 5'01.662 | | | | | | | | | | |
| 13º | 52 | 4"630 2'40.914 | | | | | | | | | | | | |



Circuit de Spa TCR BeNeLux RACE 2

GRAPHIC LAP CHART

