



**WELCOME TO  
CIRCUIT ZANDVOORT**

# Your Briefing Online

The screenshot shows the website <http://www.vwfuncup.eu/default.aspx>. The navigation menu includes: INSCRIPTIONS, ACCUEIL, CALENDRIER, RACE GUIDE, RÈGLEMENT, TECHNIQUE, PHOTOS, VIDEO, RÉSULTATS, ANNONCES, CONTACT.

**LATEST NEWS**  
TOM BOONEN AU DÉPART DES 25 HEURES VW FUN CUP AVEC ANTHONY KUMPEN, BERT LONGIN ET RUBEN VAN GUCHT !  
17/05/2017

**PROCHAINE COURSE**  
Benelux Open Races 27/05/2017  
0 Weeks : 5 Days : 18 Hours : 47 Min : 03 Sec

**IMPORTANT DOCUMENTS**  
Entry Form Zandvoort Paying Practice  
Zandvoort Drivers Briefing  
New OLED System  
RaceDirection Radio Communication  
New logo VW Fun Cup

**Belgian VW Club**



# **RACE 1 180 MINUTES**

## **SATURDAY**

**14.00 => 17.00**

**ALL TEAMS READY 30 MINUTES IN ADVANCE**

**PITSTOP WINDOW : 45 MINUTES**

**RACE 2 180 MINUTES**

**SUNDAY**

**09.20 => 12.20**

**ALL TEAMS READY 30 MINUTES IN ADVANCE**

**PITSTOP WINDOW : 45 MINUTES**

**NEW**



**Max 70  
Km/h**

**FULL COURSE  
YELLOW**

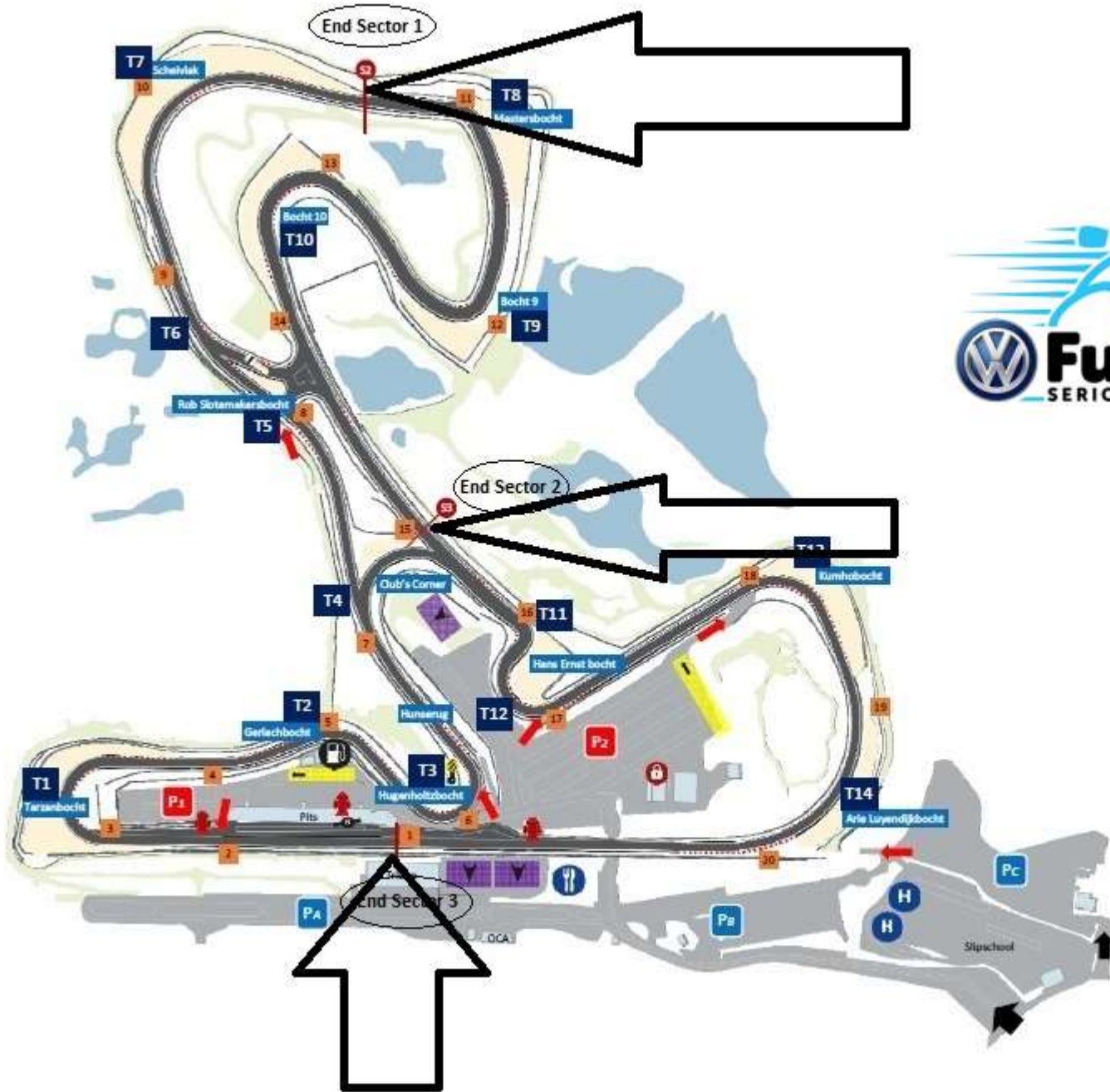
**FULL TRACK  
UNDER  
YELLOW  
CONDITION**



**NO OVERTAKING**

**3750 Rpm / Gear Ratio 3**





# SECTOR TIME

1 LAP  
=  
4.307  
m

Sector 1  
=  
1.958  
m

Sector 2  
=  
1.036  
m

Sector 3  
=  
1.313  
m

3'42

1'41

0'53

1'08



# Contact Race Direction

Radio communication & Use channel

453.4625 MHz QT = D023N

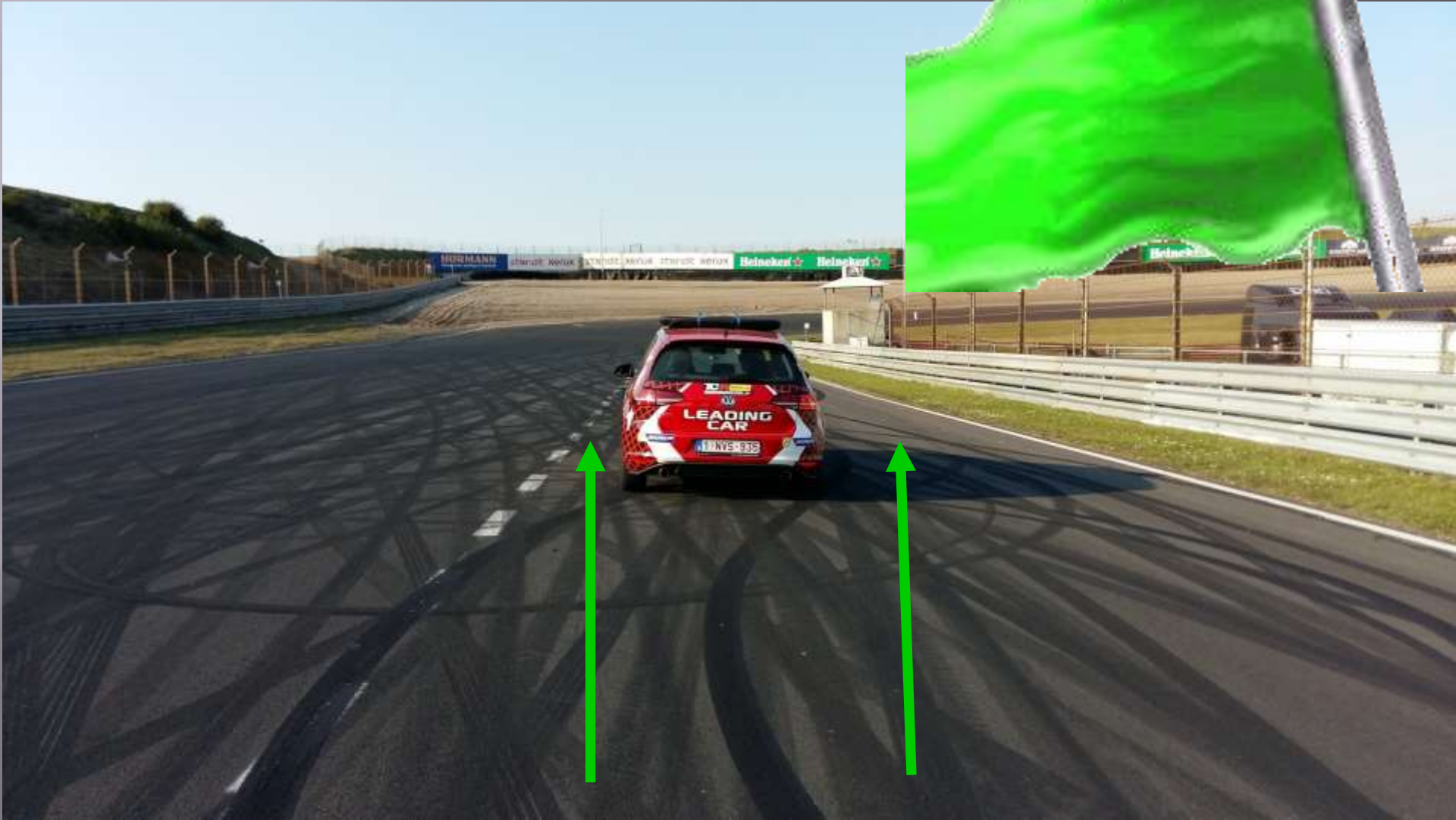
**ONLY RECEPTION**



# START PROCEDURE



# LEADING CAR ON TRACK





**BOARD**  
**15 Min**

**GREEN FLAG**



**TO GRID**

**TO  
PITLANE**



Pitlane  
Entry

**BOARD**

**5 Min**

**PITLANE**

**CLOSED**



**BOARD**

**3 Min**

**END OF WORK  
ON TRACK**

**BOARD**

**1 Min**

**START YOUR  
ENGINE**





**FORMATION LAP**

**TO GRID**



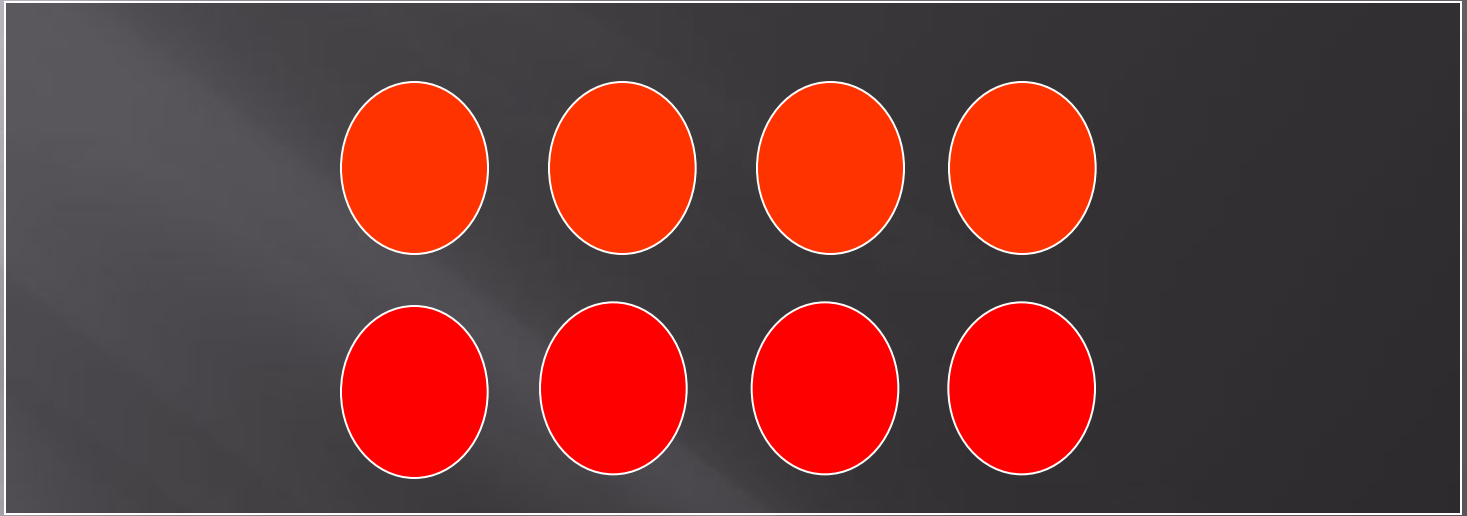
**LEADING CAR  
IN**

**FOLLOW THE SPEED OF THE LEADING CAR**



**STARTING LIGHTS**

**ROLLING START**



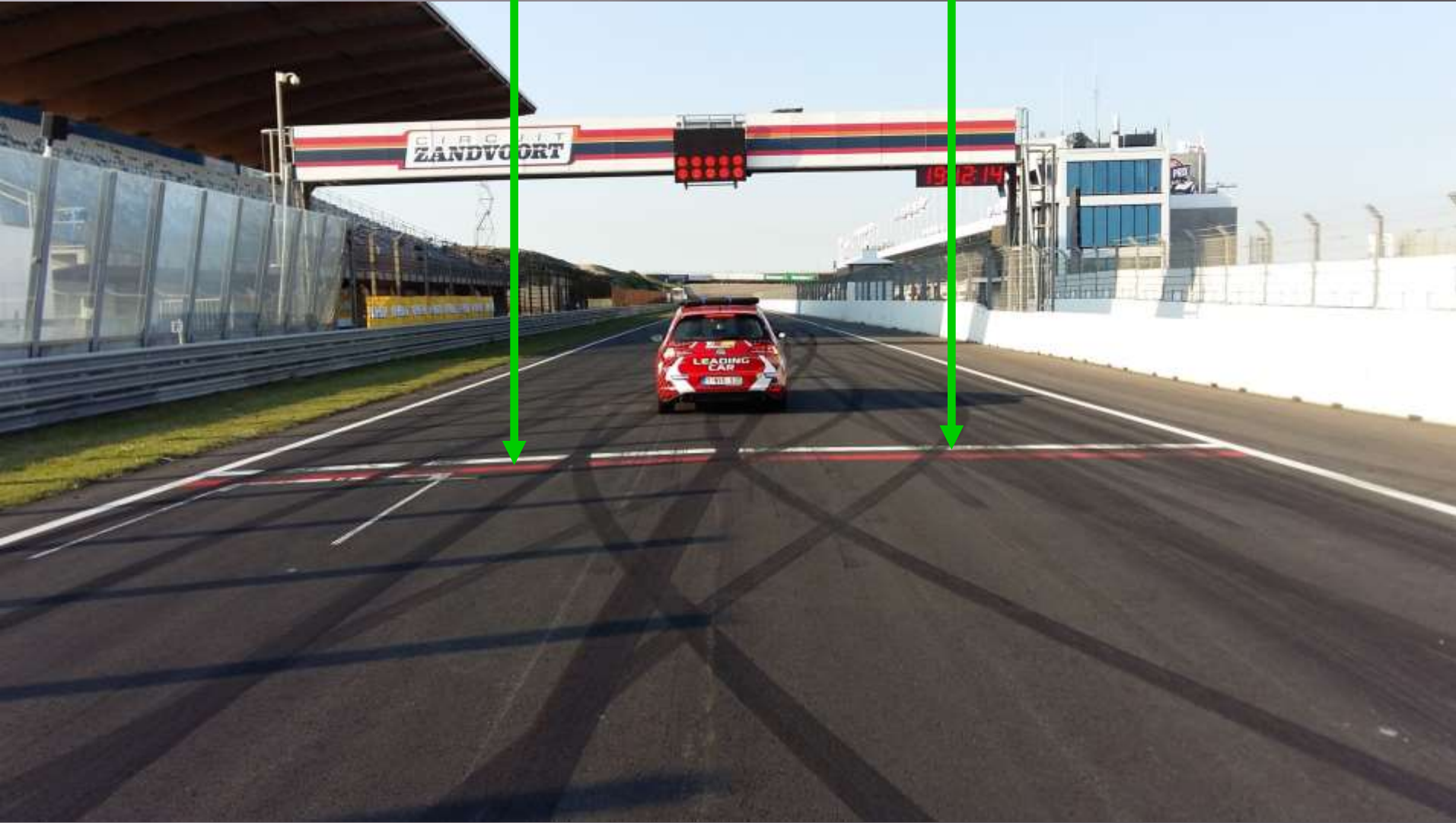
**RED LIGHT**

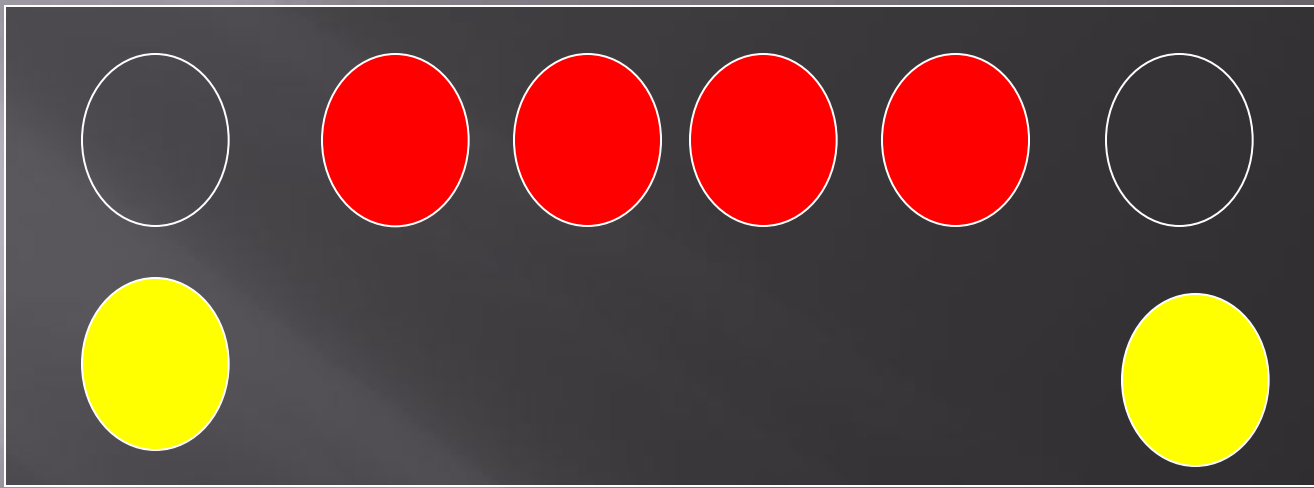




**RED LIGHT OFF => START**

**START LINE**





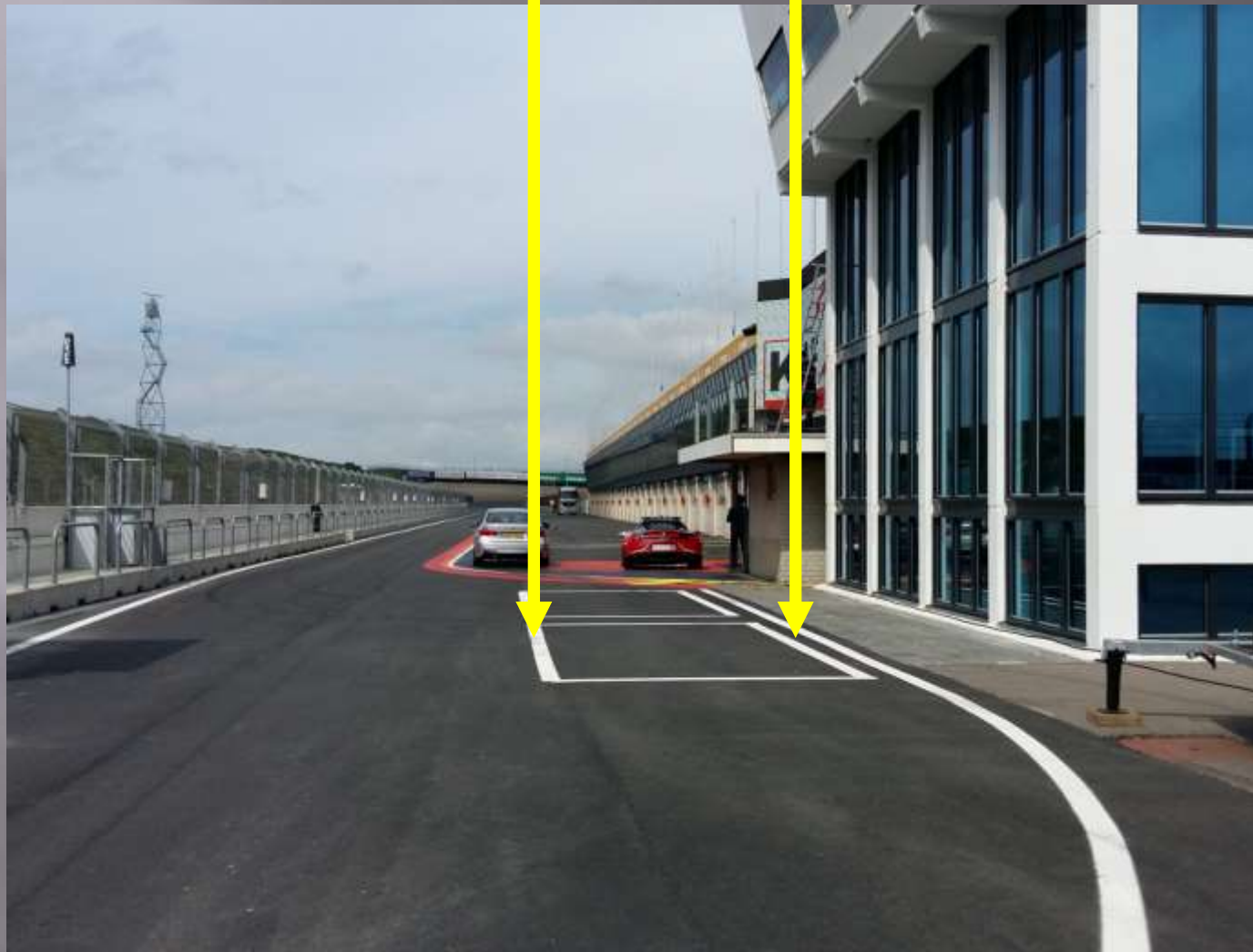
**YELLOW FLASHING  
LIGHT**

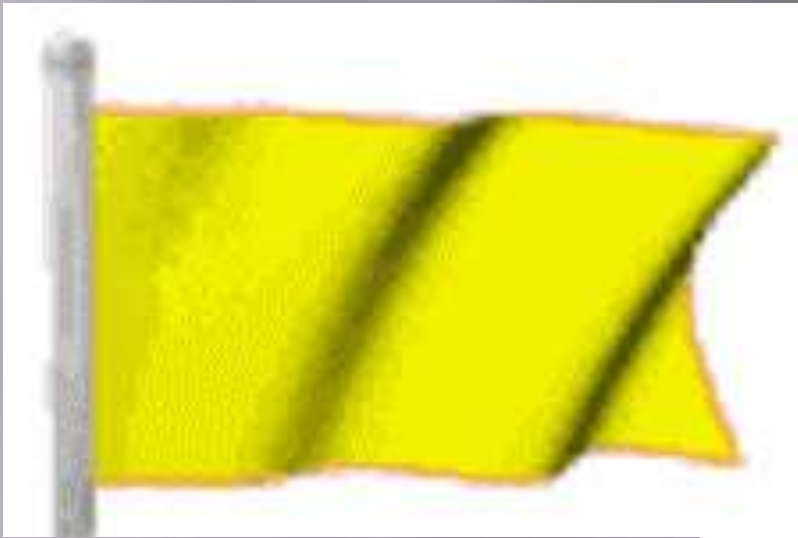
**START DELAYED OR  
EXTRA FORMATION LAP**



# RACE AND SAFETY INFORMATION

# STOP & GO AREA





**YELLOW  
FLAG**

**S C**

**SAFETY CAR PROCEDURE**

**NO OVERTAKING**



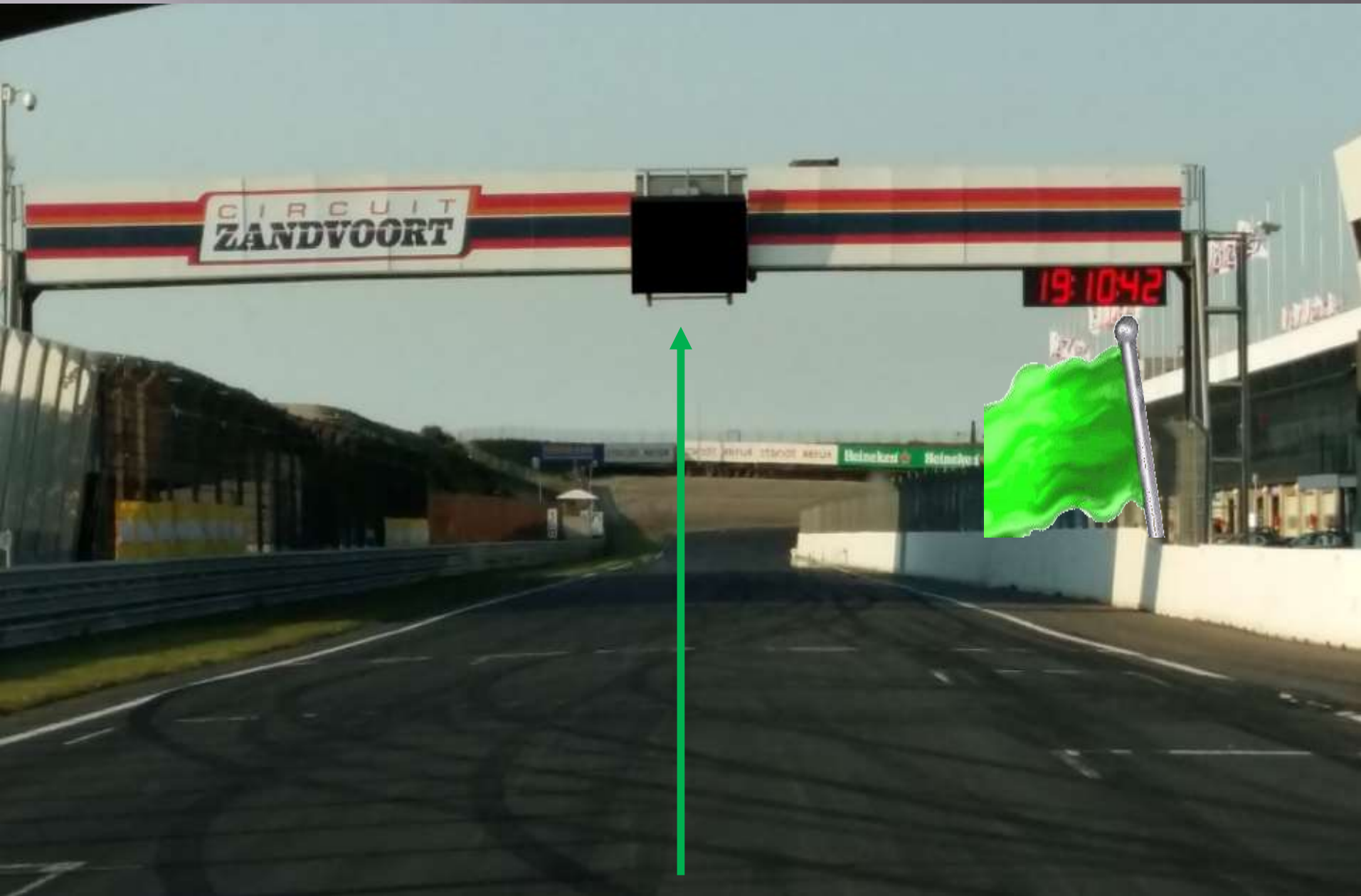
THE LEADER MAY  
**NOT** OVERTAKE THE  
SAFETY CAR  
AND  
**FOLLOW THE FILE**



**SAFETY CAR STAND BY POSITION**



**SAFETY CAR LIGHTS OFF**



**RESTART**



**RED FLAG**

**DANGER**

**IMMEDIATE RACE OR  
QUALIFYING INTERRUPTION**

**SLOWLY AND CAREFULLY  
BACK TO PIT OR RED LINE**



**RED LINE**



**RACE**





# **RACE AND PITLANE INFORMATION**

# CAUTION IN PITLANE

**NO CREW IN FRONT OF A  
STOPPING CAR**

**PROHIBITED !!!!**



# SPEED LIMIT IN 50KM/H





**RADAR  
CONTROL**

# SPEED LIMIT OUT





# SPEED LIMIT IN AND CHRONO LINE IN !





# Pitlane

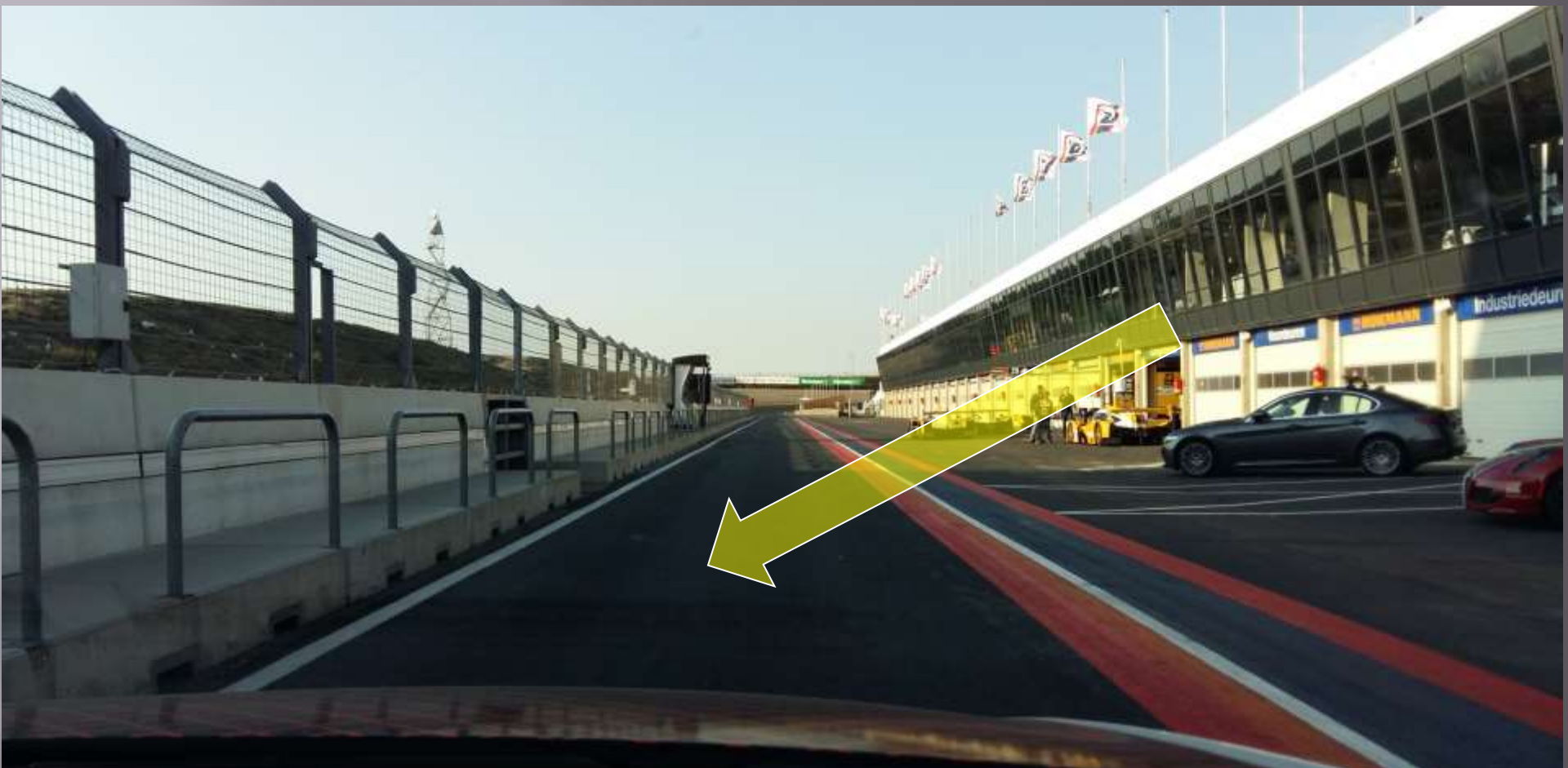


**Pit Exit**

**Pit Entry**

**Stay in a Constant  
speed of 50km/h**

▶ 282m = Pit In / Pit Out 1min 25sec



**YOU HAVE 3 SECONDS INTO THE  
FAST LINE FOR RETAKE THE  
NORMAL SPEED OF 50KM/H**

# PITLANE EXIT KEEP RIGHT



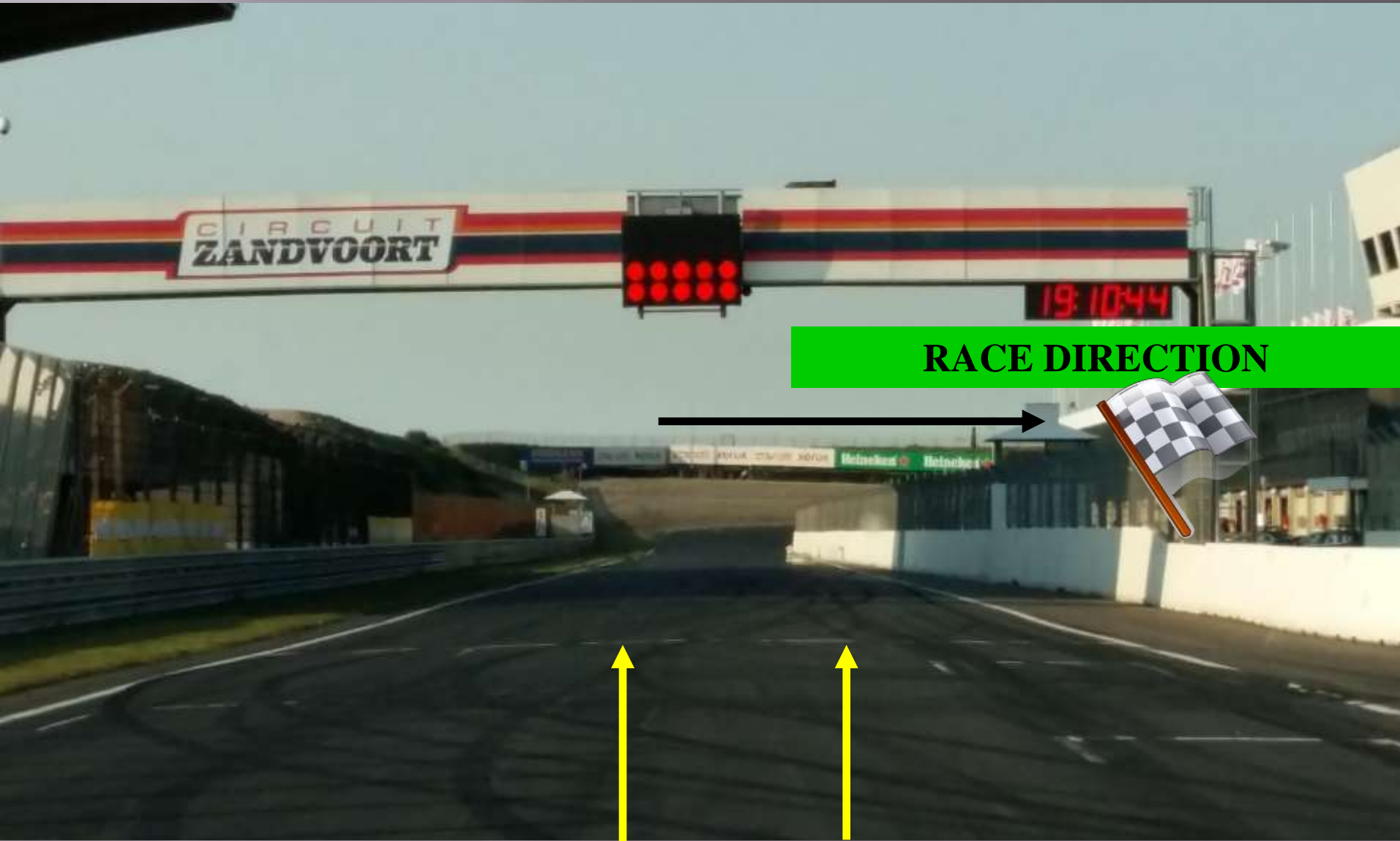


# TRACK INFORMATION





**MORE ATTENTION**



**RACE DIRECTION**

**CHRONO LINE**





# RACE INFORMATION

# **PITSTOPS DOUBLE SEATERS**

**RACE 1 + RACE 2**

**11 STOPS**

**2 MINUTES PER STOP**

# RACE INFORMATION



IF NO PASSENGER, 20 ADDITIONNAL SECONDS IN  
FRONT OF PIT BOX => 2.20 IN PIT



**UNDER TEAM  
RESPONSABILITY**

# RACE INFORMATION



DOUBLE SEATERS = 11 PITSTOPS OF 2 MINUTES

BAD CONDITIONS



**BI-PLACES  
IN**

**CHAMPIONSHIP POINTS**  
**ALLOCATION**

**HALF ALLOCATION PER RACE**



***RACE DIRECTION  
WISHES YOU A  
GREAT WEEKEND  
AT CIRCUIT PARK  
ZANDVOORT***





***THANK YOU !***